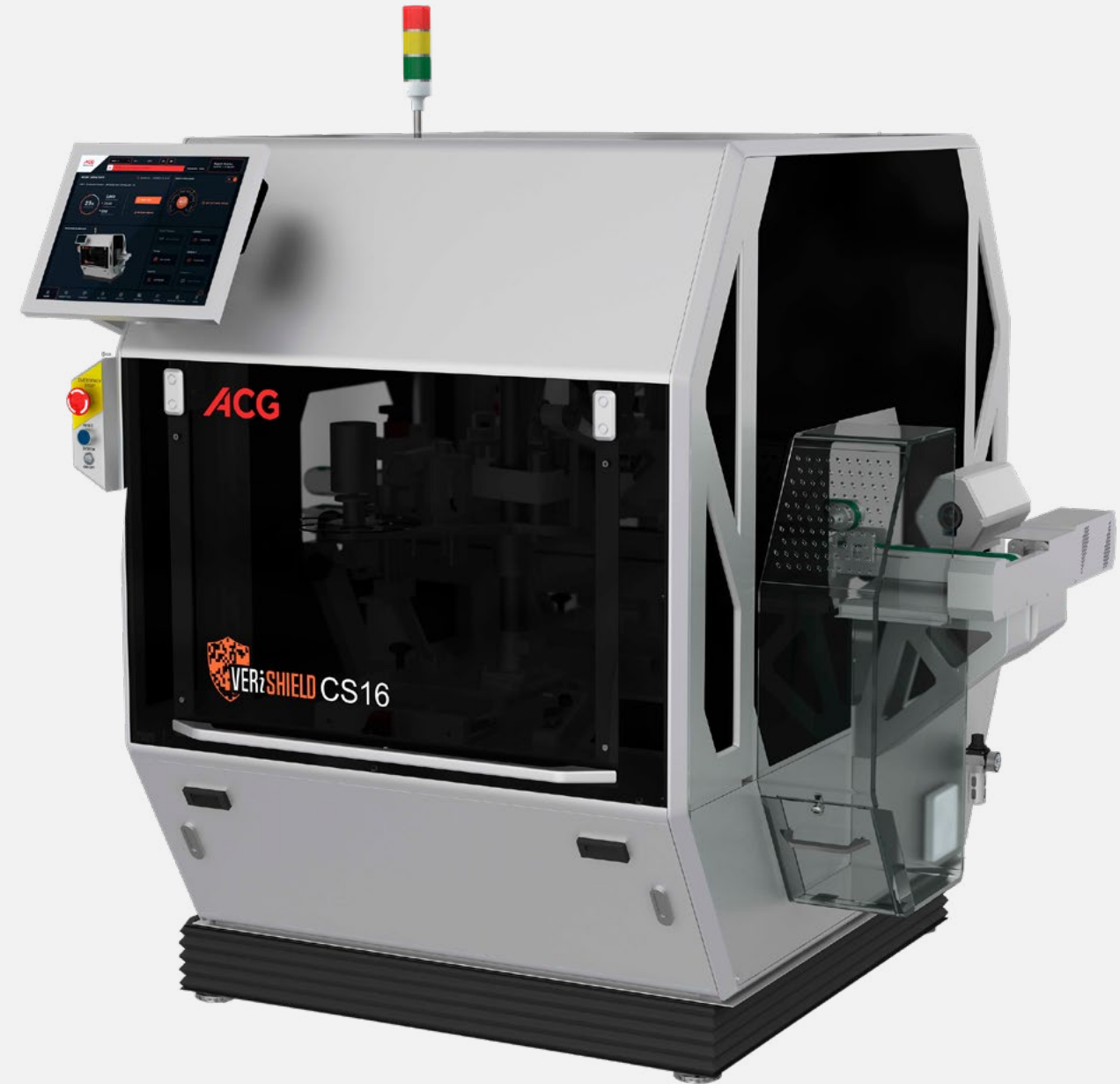




Make it better.

# Supply chain traceability



# Contents

## Supply chain traceability

### AGGREGATION SYSTEM

#### VERISHIELD CA series

- 5 VERISHIELD CA31
- 7 VERISHIELD CA32
- 8 VERISHIELD CA41

### 360° BOTTLE REFERENCING SYSTEM

#### VERISHIELD BA series

- 11 VERISHIELD BA21
- 12 VERISHIELD BA31

### CARTON SERIALISATION SYSTEM

#### VERISHIELD CS series

- 15 VERISHIELD CS11
- 17 VERISHIELD CS12
- 19 VERISHIELD CS14
- 21 VERISHIELD CS16
- 23 VERISHIELD CS17
- 25 VERISHIELD CS19

### LABEL SERIALISATION SYSTEM

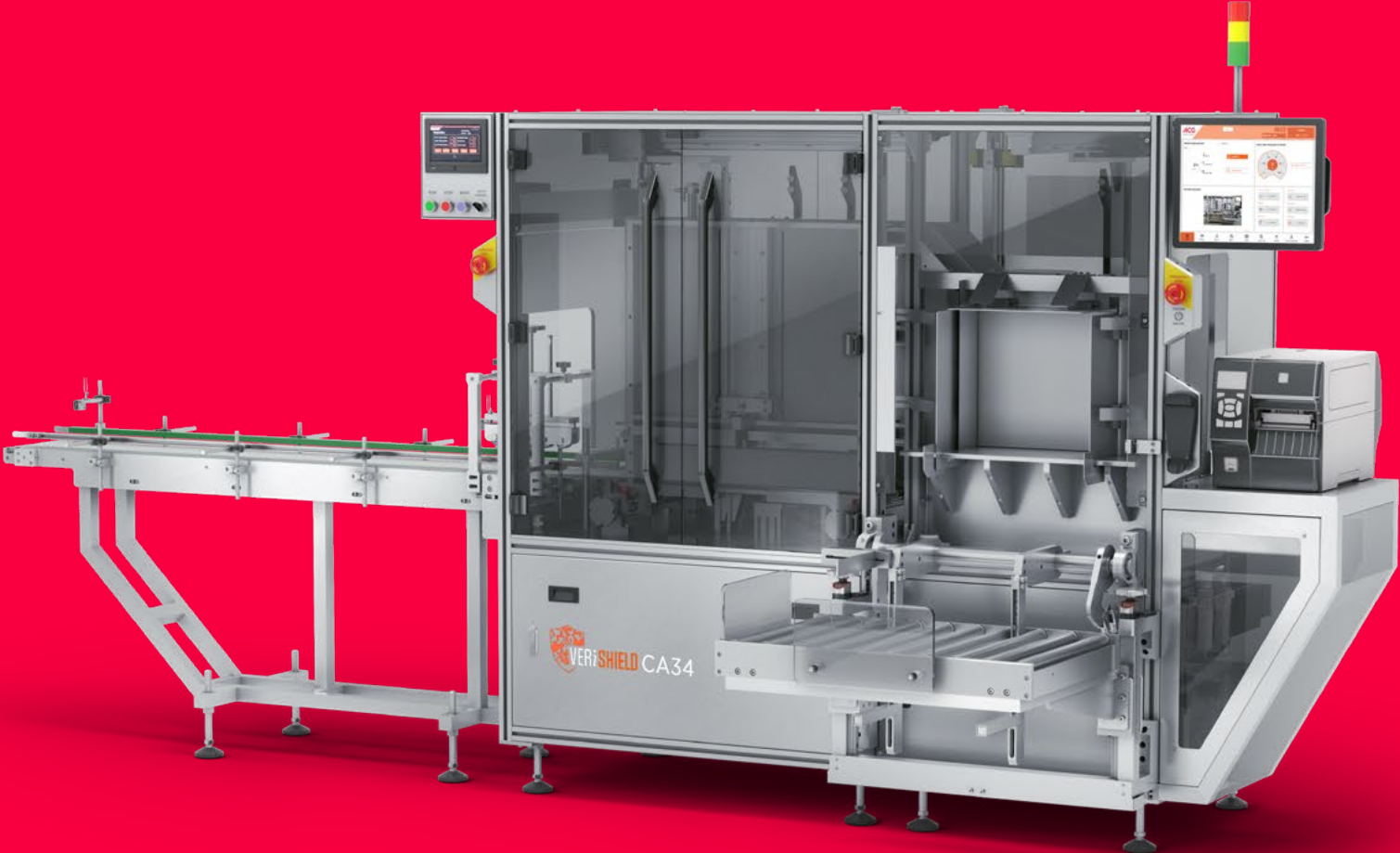
#### VERISHIELD LS series

- 29 VERISHIELD LS11
- 30 VERISHIELD LS12

# AGGREGATION SYSTEM

# VERISHIELD CA series

Embodying a world-class cGMP industrial design, the VERISHIELD CA series makes your carton and bottle aggregation process a whole lot faster and easier.



# VERISHIELD CA31

Find this information on our website:  
 Machinery > Supply chain traceability > Aggregation system >  
 VERISHIELD CA series

VERISHIELD CA31 is an intermediate aggregation system equipped with a label printer. It has an automated camera and scanning system with a label printer that performs aggregation, inspection, batch coding, and verification.

**Applications**  
 Aggregation, inspection, batch coding and verification of bottles and cartons



Features	Benefits
Aggregation of unit products (cartons) to cases/ shippers/outer cartons by decoding 2D barcodes on one carton or multiple cartons	Aggregation process is in accordance with packaging operation  Compliant with Pack & Scan, Scan & Pack processes
Detection of non-GS1 datamatrix, incorrect batch details, excess and less unit product quantity in case and shipper boxes	Reliable and accurate identification and verification of child codes and verification of printed barcodes
Autofocus for different bottle/carton/shipper sizes through distance invariant imaging technology (DIIT)	Makes automatic multilayer adjustments specific to the packaging operation process
EU Annex 11 and FDA 21 CFR Part 11 compliant with CE certification	A regulatory-compliant, audit-friendly system

## Technical specifications

<b>Machine dimensions</b>	<b>Length</b>	1250mm
	<b>Width</b>	1280mm
	<b>Height</b>	2093mm
<b>FOV</b>	600mm x 400mm	
<b>Shipper dimensions</b>	400 mm (for all sizes of carton) 450 mm (minimum first layer height 65mm)	
<b>Maximum speed</b>	8 labels/min	

# VERISHIELD CA32

Find this information on our website:  
 Machinery > Supply chain traceability > Aggregation system >  
 VERISHIELD CA series

VERISHIELD CA32 is an intermediate aggregation system. Equipped with an automated camera and scanning system along with label printer, VERISHIELD CA32 performs aggregation, inspection, batch coding, and verification. It automatically prints and places stickers on the shipper box and also generates production reports under various classifications like printed, commissioned, or damaged specimens.

## Applications

Aggregation, inspection, batch coding and verification of bottles and cartons



## Features

Features	Benefits
Decodes barcodes (GS1 datamatrix or GS1 128 barcode), data verification in printed barcode	Capable of decoding multiple 2D codes
Supports track and trace regulations of multiple countries	A single machine that fulfils diverse requirements pertaining to different regulations
Autofocus for different bottle/carton/shipper sizes through distance invariant imaging technology (DIIT)	Makes automatic multilayer adjustments specific to the packaging operation process
EU Annex 11 and FDA 21 CFR Part 11 compliant with CE certification	A regulatory-compliant, audit-friendly system

## Technical specifications

<b>Machine dimensions</b>	<b>Length</b>	3400mm
	<b>Width</b>	1850mm
	<b>Height</b>	2100mm
<b>Maximum shipper height</b>		300mm
<b>Maximum throughput</b>		4 - 5 labels/min
<b>Rejection mechanism</b>		Online pneumatic rejection

# VERISHIELD CA41

Find this information on our website:  
 Machinery > Supply chain traceability > Aggregation system >  
 VERISHIELD CA series

VERISHIELD CA41 is an intermediate aggregation system equipped with a label printer and handheld scanner. It performs aggregation, inspection and batch coding of serialised products. This system also serves aggregation requirements where manual processes might be required.

## Applications

Aggregation, inspection, batch coding and verification of bottles and cartons



## Features

Features	Benefits
Decodes GS1-128 linear barcode or GS1 datamatrix and verifies as per batch details and serial numbers	Reliably and accurately verifies child barcodes and printed parent barcode during the aggregation process  Samples printed labels
Multiple language printing for a static data field	Label can be printed for respective markets as per local language requirements
Compact design with operator-friendly label/ribbon changeover process	Operator-friendly machine design
EU Annex 11 and FDA 21 CFR Part 11 compliant with CE certification	A regulatory-compliant, audit-friendly system

## Technical specifications

<b>Machine dimensions</b>	<b>Length</b>	640mm
	<b>Width</b>	580mm
	<b>Height</b>	1625±25mm
<b>Software (functional) specifications</b>		Back-up and restore of data supported Production and audit report
<b>User/role management</b>		Centralised VERISHIELD server authentication



# 360° BOTTLE REFERENCING SYSTEM

# VERISHIELD BA series

VERISHIELD BA series enables the seamless tracking of products from production to distribution. It has been designed to efficiently manage and track the movement of individual bottles within larger packaging units by creating a hierarchical relationship between individual bottles and their respective packaging units.



# VERISHIELD BA21

Find this information on our website:  
 Machinery > Supply chain traceability > Bottle 360° referencing system >  
 VERISHIELD BA series

VERISHIELD BA21 is an intermediate helper code referencing unit with top-sert helper code referencing functionality for aggregating bottles. Equipped with side and top cameras, it performs label printing for aggregated units, and verifies printed barcodes using a handheld scanner with an operator-friendly interface. It is compatible with shrink wrap bundles of plastic or PET bottles with the bottom reference code. Additionally, this system is also suitable for shrink-wrapped carton bundles.

## Applications

Aggregation and verification of bottles



## Features

Features	Benefits
Performs side and top barcode scanning	High-speed referencing unit to cope up with production requirements
Operator-friendly interface	Easy to operate and maintain
Compact multifunctional modular design with plug-and-play capability	cGMP design and easy to integrate with packaging line conveyor
EU Annex 11 and FDA 21 CFR Part 11 compliant	A regulatory-compliant, audit-friendly system

## Technical specifications

<b>Machine dimensions</b>	<b>Length</b>	660mm
	<b>Width</b>	1350mm
	<b>Height</b>	2000mm
<b>Maximum throughput</b>		120 products/min
<b>Rejection system</b>		Encoder based rejection system with pneumatic cylinder and rejection bin
<b>Interlock support</b>		Rejection verification and rejection bin

# VERISHIELD BA31

Find this information on our website:  
 Machinery > Supply chain traceability > Bottle 360° referencing system >  
 VERISHIELD BA series

VERISHIELD BA31 is an intermediate packaging aggregation unit with bottom collation functionality for aggregating bottles or cartons equipped with a camera-based aggregation functionality. It performs label printing for aggregated units and verifies printed barcodes using a handheld scanner with an operator-friendly interface. It is also suitable for shrink wrap bundles of plastic or PET bottles with the bottom reference code and shrink wrapped carton bundles.

## Applications

Batch coding, verification and aggregation of bottles



## Features

Features	Benefits
Multiple 2D barcode decoding for aggregating bundle/case/shipper box	Easy aggregation process for bundle packaging Suitable for shrink-wrapped bundles as well
Operator-friendly interface	Easy to operate and maintain
Compact multifunctional modular design with plug-and-play capability	cGMP design and easy to integrate with current packaging line systems
EU Annex 11 and FDA 21 CFR Part 11 compliant	A regulatory-compliant, audit-friendly system

## Technical specifications

<b>Machine dimensions</b>	<b>Length</b>	910mm
	<b>Width</b>	913mm
	<b>Height</b>	1669mm
<b>Maximum speed</b>		8 labels/min (with two operators)
<b>FOV supported</b>		400mm x 300mm
<b>User/role management</b>		Centralised VERISHIELD server authentication

# CARTON SERIALISATION SYSTEM

# VERISHIELD CS series

The CS series consists of a range of accurate and reliable carton serialisation systems. Easy to use, they can serialise cartons of various sizes, from small blister packs to large shipping containers. They comply with regulatory requirements all over the world and are suitable for providing a high level of security and traceability of pharmaceutical products.



# VERISHIELD CS11

Find this information on our website:  
Machinery > Supply chain traceability > Carton serialisation system >  
VERISHIELD CS series

VERISHIELD CS11 is our carton serialisation system for online printing, inspection, and rejection of cartons with defective print.

## Applications

Batch coding, serialisation and verification of cartons



## Features

## Benefits

Adjustable for different carton dimensions	Allows quick changeover between multi-carton sizes
Equipped with variable speed control	Flexibility to adjust speed as per online output requirements
Supports track & trace regulations of multiple countries Capable of printing datamatrix code as per regulations	A single machine that fulfils diverse requirements of different regulations
EU Annex 11 and FDA 21 CFR Part 11 compliant with CE certification	A regulatory-compliant, audit-friendly system
Plug-and-play mode	The system can connect seamlessly with cartoner/checkweigher
Works on serialised and non-serialised modes of operation	Option to print details on carton based on printing format requirements

## Technical specifications

<b>Machine dimensions</b>	<b>Length</b>		1350mm
	<b>Width</b>		1060mm
	<b>Height</b>		1990±60mm
<b>Maximum throughput</b>			200 cartons/min (for minimum carton size)
<b>Carton size range</b>	<b>Minimum</b>	<b>Length</b>	65mm
		<b>Width</b>	30mm
		<b>Height</b>	15mm
	<b>Maximum</b>	<b>Length</b>	200mm
		<b>Width</b>	200mm
		<b>Height</b>	150mm
<b>Maximum carton weight</b>			500g
<b>Printing and verification (serialisation)</b>			2D Datamatrix and up to 5 lines of human readable fields
<b>Rejection system</b>			Encoder based rejection system with lock and key rejection bin
<b>Interlock and safety</b>			Emergency stop Interlock for low and high pneumatic air pressure Door interlock
<b>Report types</b>			Batch-wise report Audit reports



# VERISHIELD CS12

Find this information on our website:  
Machinery > Supply chain traceability > Carton serialisation system >  
VERISHIELD CS series

VERISHIELD CS12 allows you to serialise your cartons offline. The machine also prints, inspects, and rejects cartons ensuring only the correctly printed and serialised cartons reach the market.

## Applications

Batch coding, serialisation and verification of cartons



## Features

## Benefits

Adjustable for different carton dimensions	Allows quick changeover between multi-carton sizes
Equipped with variable speed control	Flexibility to adjust speed as per online output requirements
Supports track & trace regulations of multiple countries	A single machine that fulfils diverse requirements of different regulations
EU Annex 11 and FDA 21 CFR Part 11 compliant with CE certification	A regulatory-compliant, audit-friendly system
Works on serialised and non-serialised modes of operation	Option to print details on carton based on printing format requirements

## Technical specifications

<b>Machine dimensions</b>	<b>Length</b>		1750mm
	<b>Width</b>		1050mm
	<b>Height</b>		1840±65mm
<b>Maximum throughput</b>			200 cartons/min (for minimum carton size)
<b>Carton size range</b>	<b>Minimum</b>	<b>Length</b>	65mm
		<b>Width</b>	60mm
	<b>Maximum</b>	<b>Length</b>	300mm
		<b>Width</b>	200mm
<b>Rejection system</b>			Encoder based rejection system with lock and key rejection bin
<b>Interlock and safety</b>			Emergency stop Interlock for low and high pneumatic air pressure
<b>Report types</b>			Batch-wise report Audit reports

# VERISHIELD CS14

Find this information on our website:  
Machinery > Supply chain traceability > Carton serialisation system >  
VERISHIELD CS series

VERISHIELD CS14 is a carton serialisation machine equipped with a check weigher. The machine is adjustable to cartons of different dimensions and can be easily integrated with various carton packaging machines. Further, you can quickly change over between multi-carton sizes and, in the end, get a consolidated production report.



## Applications

Batch coding, serialisation, verification and checkweighing of cartons

## Features

Compactly designed check-weighing solution with an accuracy of +0.5g

Online serialisation, barcode printing, data printing (GTIN, expiry, batch number and unique serial number as per GS1 guidelines)

Supports both serialised and non-serialised batches

EU Annex 11 and FDA 21 CFR Part 11 compliant with CE certification

## Benefits

Occupies much lesser floor space as compared to separate checkweigher, print and inspection unit

Printing and inspection as per specific regulatory requirements

A single machine that meets diverse requirements of different regulations

Provision to print and inspect products for regulated and non-regulated markets

A regulatory-compliant, audit-friendly system

## Technical specifications

<b>Machine dimensions</b>	<b>Length</b>	1750mm	
	<b>Width</b>	1060mm	
	<b>Height</b>	1950±60mm	
<b>Maximum throughput</b>		150 cartons/min (for minimum carton size)	
<b>Carton size range</b>	<b>Minimum</b>	<b>Length</b>	80mm
		<b>Width</b>	30mm
		<b>Height</b>	15mm
	<b>Maximum</b>	<b>Length</b>	180mm
		<b>Width</b>	90mm
		<b>Height</b>	90mm
<b>Carton weight</b>	<b>Minimum</b>	10mm	
	<b>Maximum</b>	500g	
<b>Field of view</b>		50mm x 25mm	
<b>Interlock and safety</b>		Emergency stop Label low/carton closing/backdoor interlock Pneumatic pressure interlock Front door interlock Acrylic guard interlock	
<b>Report types</b>		Batch-wise report Audit reports	

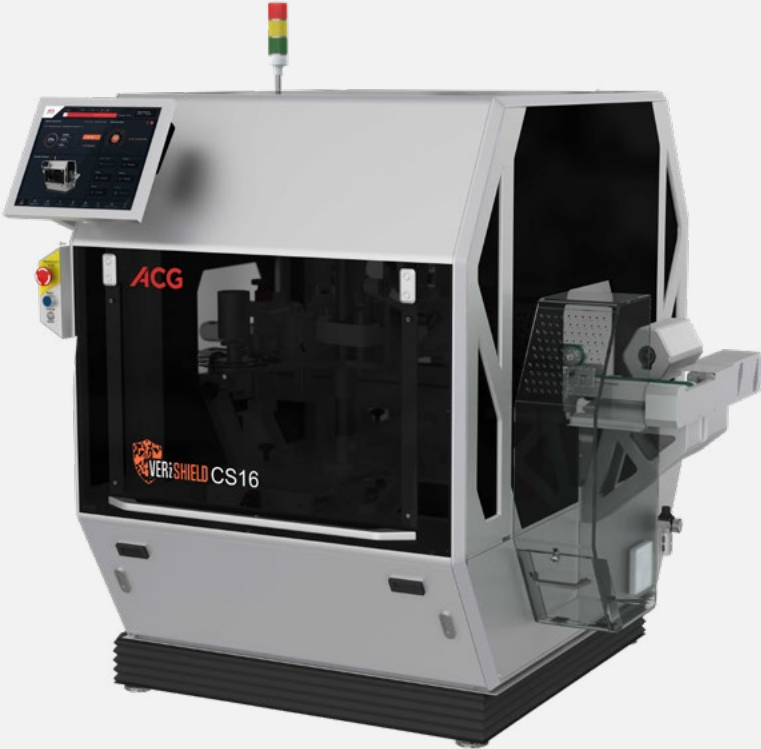
# VERISHIELD CS16

Find this information on our website:  
Machinery > Supply chain traceability > Carton serialisation system >  
VERISHIELD CS series

VERISHIELD CS16 is different from our other carton serialisation systems in that it also performs tamper-evident labelling. In addition, it also prints and inspects cartons, and rejects those that are serialised incorrectly or do not have tamper-evident labels. Its plug-and-play mode allows it to work with any cartoning line.

**Applications**  
Batch coding, serialisation, and verification of cartons and tamper-evident labelling

Features	Benefits
High-speed machine with a compact design	Minimal space required for integrating in line
Online rejection based on serialisation and inspection of tamper evident label (through sensor-based input)	Printing, inspection, label application verification and rejection using a single machine
EU FMD regulation compliant	Ideal for products manufactured in or exported to Europe
EU Annex 11 and FDA 21 CFR Part 11 compliant with CE certification	A regulatory-compliant, audit-friendly system



## Technical specifications

<b>Machine dimensions</b>	<b>Length</b>	1400mm	
	<b>Width</b>	1660mm	
	<b>Height</b>	1800±65mm	
<b>Maximum throughput</b>		300 cartons/min (for minimum carton size)	
<b>Carton size range</b>	<b>Minimum</b>	<b>Length</b>	65mm
		<b>Width</b>	30mm
		<b>Height</b>	15mm
	<b>Maximum</b>	<b>Length</b>	200mm
		<b>Width</b>	150mm
		<b>Height</b>	90mm
<b>Interlock and safety</b>		Emergency stop button Low air pressure alarm Door opening	
<b>Report types</b>		Batch-wise report Audit reports	

# VERISHIELD CS17

Find this information on our website:  
Machinery > Supply chain traceability > Carton serialisation system >  
VERISHIELD CS series

VERISHIELD CS17 is a carton printing, inspection, and rejection system with tamper evident labelling capability that complies with global regulations. The system is equipped with serialisation printing, advanced vision inspection technology and tamper evident label application capabilities with an operator-friendly interface.

**Applications**  
Batch coding, serialisation, and verification of cartons and tamper-evident labelling

Features	Benefits
High-speed machine with a compact design	Requires minimal floor space and time
Ergonomic, aesthetic design with operator-friendly interface	Easy to operate and maintain the system
EU FMD compliant	Ideal for products manufactured in or exported to European countries
EU Annex 11 and FDA 21 CFR Part 11 compliant with CE certification	A regulatory-compliant, audit-friendly system



## Technical specifications

<b>Machine dimensions</b>	<b>Length</b>	1400mm	
	<b>Width</b>	1660mm	
	<b>Height</b>	1800±65mm	
<b>Maximum throughput</b>		200 cartons/min (for minimum carton size)	
<b>Carton size range</b>	<b>Minimum</b>	<b>Length</b>	65mm
		<b>Width</b>	30mm
		<b>Height</b>	15mm
	<b>Maximum</b>	<b>Length</b>	200mm
		<b>Width</b>	150mm
		<b>Height</b>	90mm
<b>Rejection system</b>		Combined rejection bin with rejection verification functionality	
<b>Interlock and safety</b>		Emergency stop button Low air pressure alarm Labeller-low interlock Interlock for low and high pneumatic air pressure Acrylic door interlock	



# VERISHIELD CS19

Find this information on our website:  
 Machinery > Supply chain traceability > Carton serialisation system >  
 VERISHIELD CS series

VERISHIELD CS19 carton printing, inspection and rejection system for complying with global regulations. The system is equipped with serialisation printing equipment, advanced vision inspection technology and tamper evident label application capabilities with an operator-friendly interface.

**Applications**  
 Batch coding, serialisation and verification of cartons



Features	Benefits
High-speed machine with a compact design	Requires minimal floor space and time
Ergonomic, aesthetic design with operator-friendly interface evident label (through sensor-based input)	Easy to operate and maintain the system
EU FMD regulation compliant	Ideal for products manufactured in or exported to European countries
EU Annex 11 and FDA 21 CFR Part 11 compliant with CE certification	A regulatory-compliant, audit-friendly system

## Technical specifications

<b>Machine dimensions</b>	<b>Length</b>	1564mm	
	<b>Width</b>	890mm	
	<b>Height</b>	2026mm	
<b>Maximum throughput</b>		400 cartons/min	
<b>Carton size range</b>	<b>Minimum</b>	<b>Length</b>	65mm
		<b>Width</b>	30mm
		<b>Height</b>	15mm
	<b>Maximum</b>	<b>Length</b>	200mm
		<b>Width</b>	200mm
		<b>Height</b>	150mm
<b>Carton weight</b>		50g to 1kg	
<b>Rejection system</b>		Time/encoder-based rejection system with pneumatic cylinder and rejection bin	
<b>Interlock and safety</b>		<ul style="list-style-type: none"> <li>Machine ready interlock</li> <li>Consecutive reject</li> <li>Electrical control panel door interlock</li> <li>Machine stop on rejection verification</li> <li>Machine stop on rejection bin full</li> <li>Emergency stop</li> <li>Pneumatic (air pressure) interlock</li> </ul>	

# **LABEL SERIALISATION SYSTEM**

# VERISHIELD LS series

The VERISHIELD LS series is designed to uniquely identify and serialise labels, providing a comprehensive solution for product authentication, traceability, and supply chain security.



# VERISHIELD LS11

Find this information on our website:  
Supply chain traceability > Label serialisation system > VERISHIELD LS series

VERISHIELD LS11 is our label serialisation system for online printing and inspection of labels.

## Applications

Batch coding, serialisation and verification of labels



## Features

Features	Benefits
In-line label printing and inspection functionality	Can be seamlessly integrated with existing bottling line for serialisation
High-speed machine with a compact design	Requires minimal time floor space and time
Supports track and trace regulations of multiple countries	A single machine that fulfils diverse requirements of different regulations
Plug and play compatibility with bottling line	User-friendly interface for operation and maintenance activities  Can be integrated on existing bottling line equipment for serialisation functionality

## Technical specifications

<b>Maximum throughput</b>	120 products/min
<b>Field of view (FOV)</b>	50mm x 25mm
<b>Rejection system</b>	Encoder-based rejection system with pneumatic cylinder and rejection bin

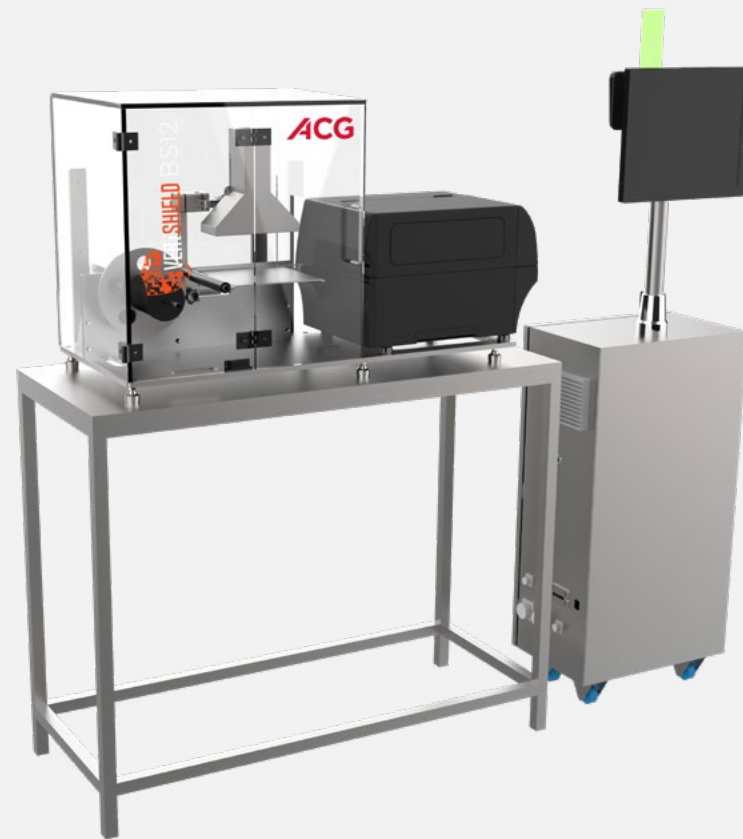
# VERISHIELD LS12

Find this information on our website:  
Supply chain traceability > Label serialisation system > VERISHIELD LS series

LS12 is a stand-alone carton serialisation system for inspection, and rejection of labels with defective print.

## Applications

Batch coding, serialisation and verification of labels



## Features

Stand-alone label printing, inspection and rejection functionality

High-speed machine with a compact design

Supports track and trace regulations of multiple countries

EU Annex 11 and FDA 21 CFR Part 11 compliant

## Benefits

Suitable for low volume production facilities

Requires minimal time floor space and time

A single machine that fulfils diverse requirements of different regulations

A regulatory-compliant, audit-friendly system

## Technical specifications

**Maximum throughput**

12 labels/min

**Rejection system**

Machine stop



**Make it better.**

ACG Inspection  
127, Kandivali Industrial Estate,  
Charkop, Kandivali (West),  
Mumbai 400 067, India

+91 22 5012 0700  
[sales.inspection@acg-world.com](mailto:sales.inspection@acg-world.com)

[www.acg-world.com](http://www.acg-world.com)